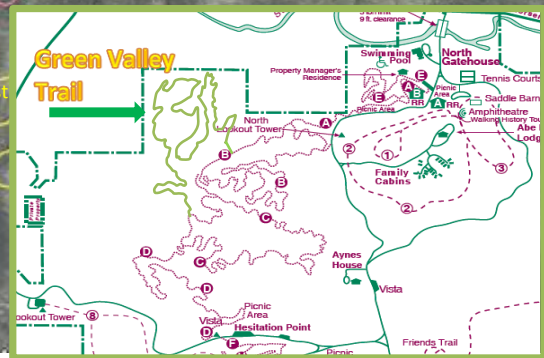
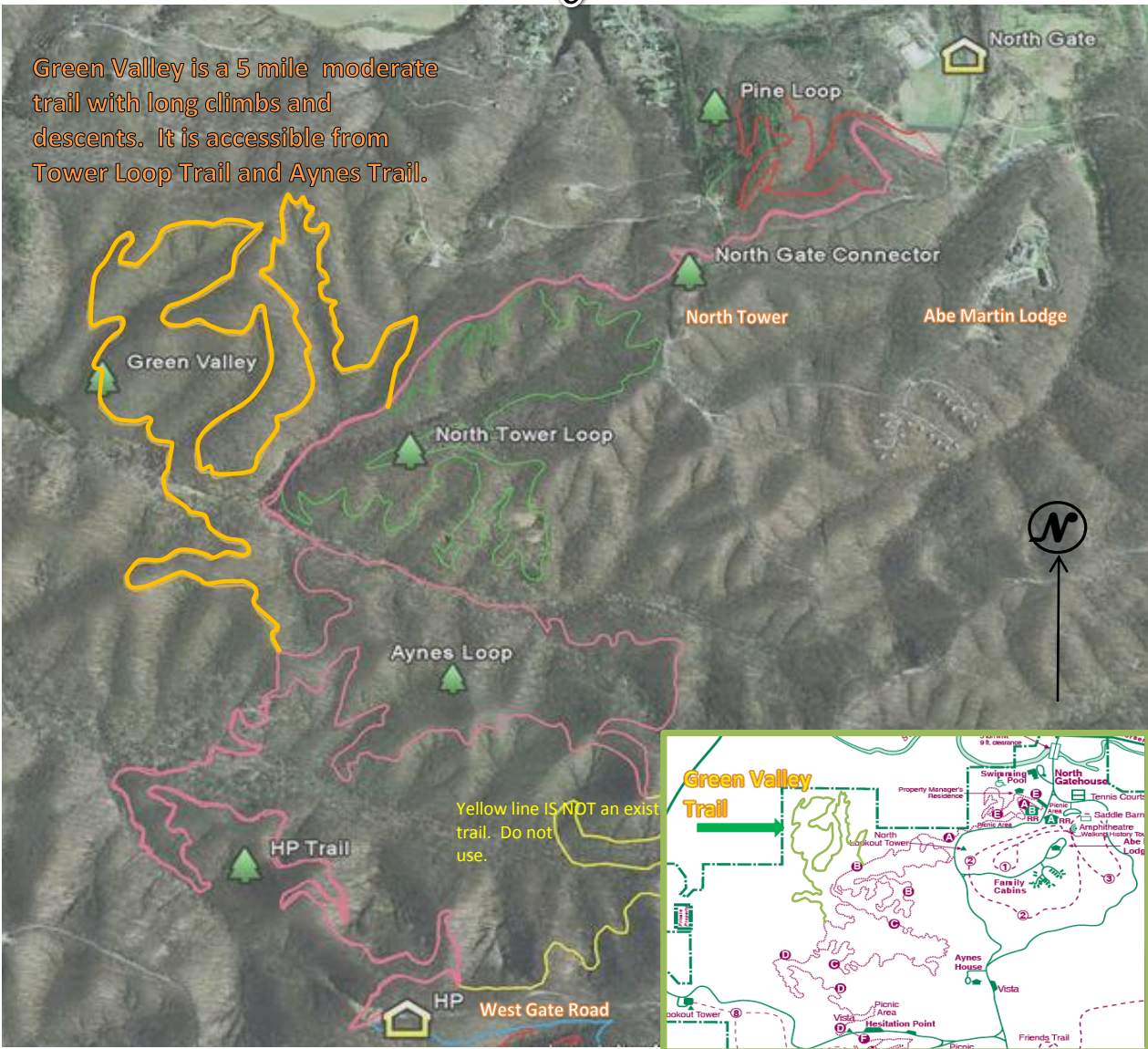




# The New Green Valley Trail Brown County State Park

Green Valley is a 5 mile moderate trail with long climbs and descents. It is accessible from Tower Loop Trail and Aynes Trail.



## TIPS

- \*Do not ride muddy or very wet trails.
- \*Always wear a helmet.
- \*Be able to give your location in an emergency.
- \*Take plenty of water and a cell phone.
- \*Move over for faster and on coming riders.
- \*Be reasonable with your speed. Just because you can does not mean you should.
- \*Use marked bike trails only.
- \*Report hazards to park office.

Scale = .5 Mile

- Walnut Trail
- HP Trail
- North Tower Loop
- Aynes Loop & North Gate Connector
- Green Valley Trail
- Pine Loop

For more information contact:  
Brown County State Park  
P.o. Box 608  
Nashville, IN 47448  
Phone 812-988-6406  
Alternate 812-988-5238 or 5245  
For Emergencies Call 911